

CERTIFICATE OF LOCATION OF GOVERNMENT CORNER

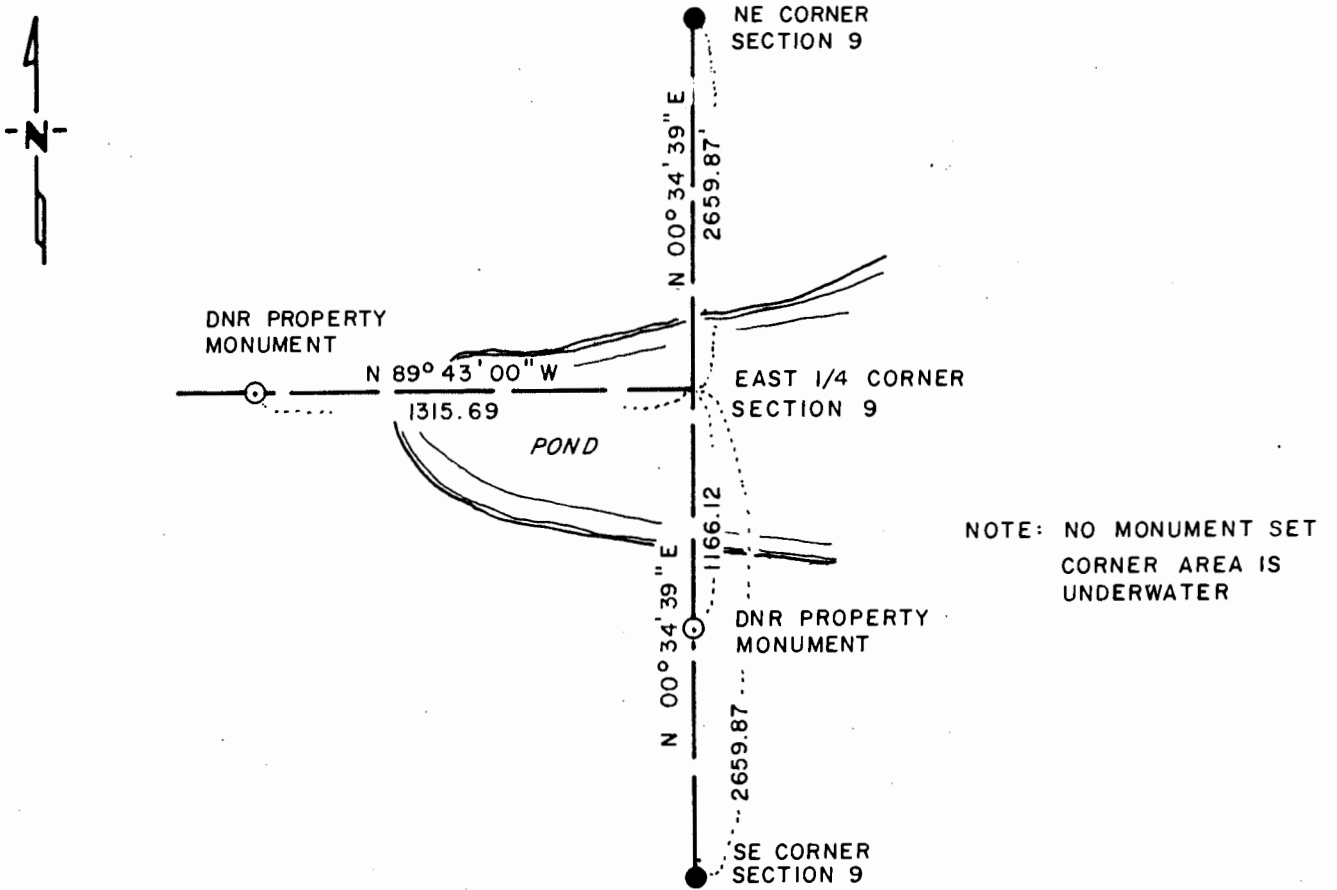
EAST QUARTER Corner of Section 9, Township 108 N., Range 43 W., 5th P.M.

STATE OF MINNESOTA, County of MURRAY

At the corner location shown on the sketch:

- On _____ found a _____
DATE
- left monument as found, lowered monument, removed monument (explain)
- On _____ placed a _____
DATE

SKETCH OF REFERENCE TIES



NOTE: NO MONUMENT SET
CORNER AREA IS
UNDERWATER

BEARINGS ARE ASSUMED ORIENTATION

Statement of evidence relative to this corner location is on back of page.

LRP 8-21-86
FILE G-383

I hereby certify that this document and the data contained herein was prepared by me or under my direct supervision.

Lowell B. Pommeroy 8-21-86
SIGNATURE DATE

- Registration No. 17005
- Land Surveyor, Professional Engineer
 - County Surveyor, County Engineer

OFFICE OF THE COUNTY RECORDER
County of _____

I hereby certify that this document was filed in the Co. Recorders office at _____ .M. on the _____ day of _____ A.D., 19 _____

County Recorder _____
By _____, Deputy
DOCUMENT NO. _____

East Quarter Corner Section 9, Township 108 North, Range 43 West

This corner was originally established by the U. S. General Land Office survey in 1866. The government notes show corner as a point in the marsh, too wet to set a post. Government notes show corner:

6 chains (396.00 ft.) north of edge of marsh

2 chains (132.00 ft.) south of edge of marsh

In May 1986, the DNR Bureau of Engineering contacted the Murray County Offices of the Recorder and Highway Engineer for corner information.

The following information was obtained from the County Recorder's Office.

Surveyor's Record Book, on page 207, contains a survey of Section 9 by J. W. Woolstencraft, dated November 21, 1908. Survey states all corners were established.

No mention is made as to what was found or set at this corner.

The above information is also contained in the County Highway Engineer's Office.

In January 1957, the DNR Bureau of Engineering traversed to the area of the corner and found the area of the corner to be in pond. Set an iron pin at the lost position for this corner. Corner measures 2657.5 ft. from adjoining Section Corners.

In May 1986, the DNR Bureau of Engineering traversed to the area of the corner and found the area of the corner to be underwater. Located fence lines north, south and west of the corner area and computed an intersection point. Computed the lost position and found it to measure:

2659.87 ft. from adjoining section corners

1.97 ft. south and 5.05 ft. west of the computed intersection of fences

197 ft. south of water's edge of a pond

Accept the lost position as the location of the corner.

Traverse information is available from the DNR Bureau of Engineering.